

# Honeywell

## UTP CAT5E LOADED PATCH PANEL

HONEYWELL Cat 5e UTP loaded patch panel are modular designs for ease of termination and comes with integral cable manager. RJ 45 modules are suitable for 22 to 26 AWG solid wire terminations.

### Features

- Fully Loaded With 24 Ports
- High Quality Metal Frame of SPCC 1.5 mm Thickness
- Compatible For Termination With 22-26 AWG, 4 pair UTP Cable
- Color-Coded Universal Labels Complying With T568A And T568B Wiring Schematics
- Cable Management With 1.5 mm Thick SPCC Management Bar



### Technical Specifications

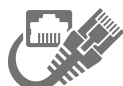
|                    |  |
|--------------------|--|
| ID Plate:          | PVC, Transparent Color With Paper  |
| Panel:             | SPCC, 1.5 mm Thickness With Black Color Painted  |
| RJ45 Jack:         | Housing: ABS, UL 94V-2, Transparent Color  |
| RJ45 Jack Contact: | Material-phosphor Bronze With Nickel Plated<br>Finish: 50 Micro-inches Gold Plated on Plug<br>Contact Area |
| IDC:               | Housing - PC+ Glass Fiber, UL 94V-2<br>Terminal: Phosphor Bronze With Tin Plated                           |
| Jack Bracket Set:  | ABS, UL 94-0   |
| Support Bar:       | SPCC, 1.5 mm Thickness With Black Color Painted  |



COPPER



CAT5e



UTP



### Ordering Information (Part Codes and Description)

| No. | Part Code                     | Description                            |
|-----|-------------------------------|--|
| 1   | HC000111/CPR/C5E/UTP/PP/LD/24 | Cat 5e 24 ports LOADED UTP Patch Panel |
| 2   | HC000112/CPR/C5E/UTP/PP/LD/48 | Cat 5e 48 ports LOADED UTP Patch Panel |

[www.honeywellconnection.com](http://www.honeywellconnection.com)

The Honeywell trademark is used under license from Honeywell International Inc. Honeywell International Inc. makes no representation or warranties with respect to this product. This product is manufactured by Secure Connection Limited, Hong Kong.

All trade names are registered trademarks of respective manufacturers listed. ©2022 Secure Connection Ltd., Hong Kong. All rights reserved