

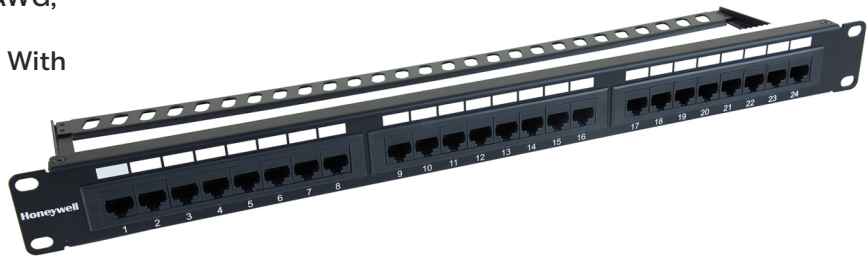
# Honeywell

## UTP CAT6A LOADED PATCH PANEL

HONEYWELL Cat 6A UTP loaded patch panel are modular designs for ease of termination and comes with integral cable manager. RJ 45 modules are suitable for 22 to 26 AWG solid wire terminations.

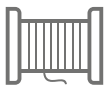
### Features

- Fully Loaded With 24 Ports
- High Quality Metal Frame of SPCC 1.5 mm Thickness
- Compatible For Termination With 22-26 AWG, 4 Pair UTP Cable
- Color-Coded Universal Labels Complying With T568A And T568B Wiring Schematics
- Cable Management With 1.5 mm Thick SPCC Management Bar



### Technical Specifications

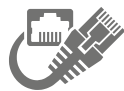
Identification:	ID Plate: PVC, Transparent Color With Paper
Panel:	SPCC, 1.5 mm Thickness With Black Color Painted
RJ45 Jack:	Housing: ABS, UL 94v-0 Contact Brackets: PC, UL 94V-2 Transparent Color
RJ45 Jack Contact:	Material-Phosphor Bronze With Nickel Plated Finish: 50 Micro-inches Gold Plated On Plug Contact Area
IDC:	Housing - PC+ Glass Fiber, UL 94V-2 Terminal: Phosphor Bronze With Tin Plated
Jack Bracket Set:	ABS, UL 94V-0
Support Bar:	SPCC, 1.5 mm Thickness With Black Color Painted



COPPER



CAT6A



UTP



### Ordering Information (Part Codes and Description)

No.	Part Code	Description
1	HC000311/CPR/C6A/UTP/PP/LD/24	Cat 6A 24 ports LOADED UTP Patch Panel
2	HC000312/CPR/C6A/STP/PP/LD/24	Cat 6A 48 ports LOADED UTP Patch Panel

[www.honeywellconnection.com](http://www.honeywellconnection.com)

The Honeywell trademark is used under license from Honeywell International Inc. Honeywell International Inc. makes no representation or warranties with respect to this product. This product is manufactured by Secure Connection Limited, Hong Kong.

All trade names are registered trademarks of respective manufacturers listed. ©2022 Secure Connection Ltd., Hong Kong. All rights reserved